



# Sprinter MY2019+ Electric preparation for additional door (Code EA5) Technical Bulletin

Date 10/10/2019  
Mercedes-Benz Vans, LLC

Mercedes-Benz



# Notice

Mercedes-Benz USA, LLC does not warrant the accuracy of the information contained in this bulletin and reserves the right to modify or append this bulletin without prior notification. Mercedes-Benz disclaims all liability associated with the provision of this bulletin.

This bulletin is not intended to serve as a work instruction, but merely to provide some helpful information for upfitters to take into consideration before retrofitting or modifying a Mercedes-Benz or Freightliner Sprinter.

Prior to making any modification to or installing any equipment in or on a Mercedes-Benz or Freightliner Sprinter, you should review and insure compliance with all applicable laws and regulations, consult with Upfitter Management Vans for additional and updated information, and read the Body & Equipment Guidelines (BEG) for Sprinter Model Series 907.

## Upfitter Management Vans Contacts:

For information or upfitter inquiries  
please submit a request via our website:

[www.upfitterportal.com](http://www.upfitterportal.com)

# Sprinter MY2019 Electrical preparation for additional central locking code EA5

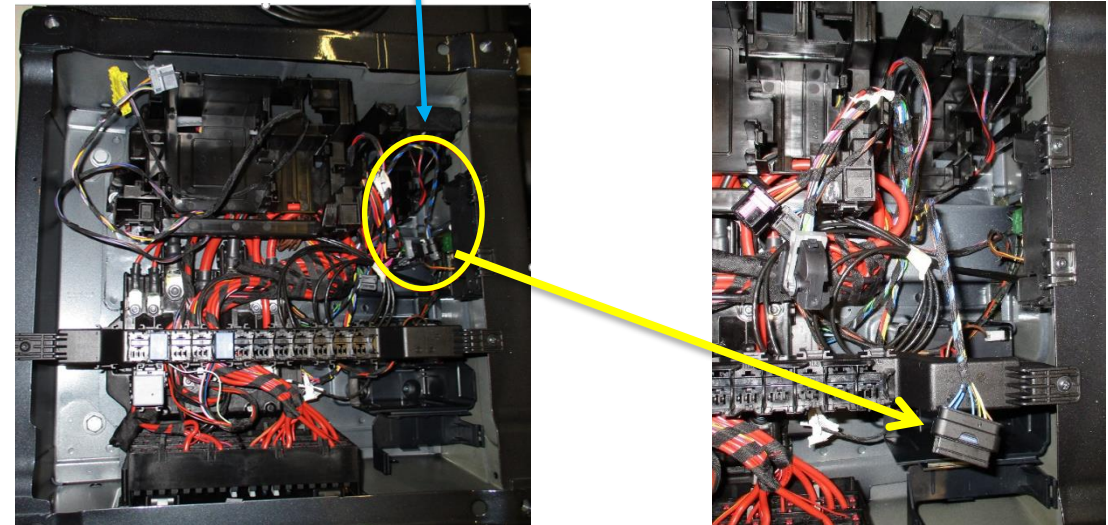
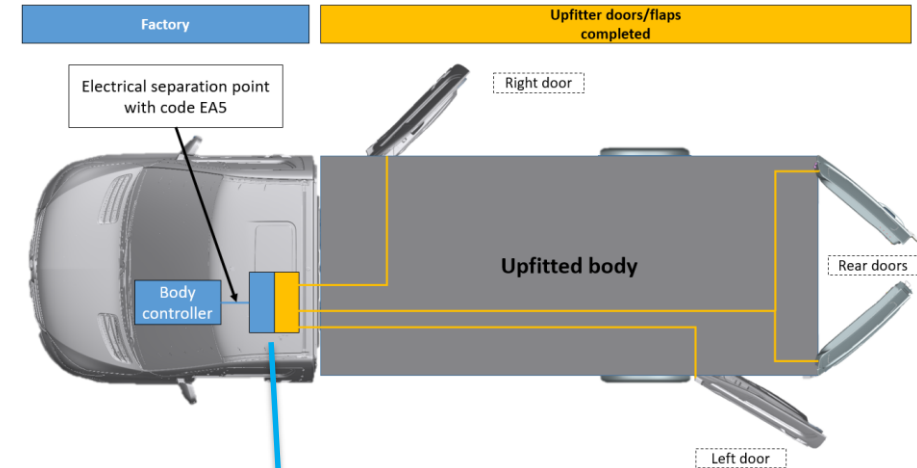
Pre Installation includes a wiring harness that gives the cab chassis customers a chance to add additional doors that use the same OEM key fob signal for unlocking and locking the doors and also indicate door lock status in the instrument cluster.

## Connector location :

EA5 connector located under driver seat box (Check photos) .

## Process :

1. Add to VeDoc the O code as follow :
  - a) Code O04 for the additional rear door
  - b) Code OA5 for the additional left rear door
  - c) Code OA6 for the additional right door
2. Perform SCN coding for body controller unit
3. Assemble all the door mechanical/electrical parts
4. Run a quick test with Xentry and Clear all errors in ECUs
5. Perform function check for additional door



EA5 connector location

# Usage possibilities of the EA5 connector

Adding Rear door

Used PIN	1,2,5,8
Not used PIN	3,4,6,7

**VeDoc code is**  
**004**



Adding extra rear left door

Used PIN	1,2,6,8
Not used PIN	3,4,5,7

**VeDoc code is**  
**0A5**



Adding extra rear right door

Used PIN	1,2,7,8
Not used PIN	3,4,5,6

**VeDoc code is**  
**0A6**



Pin	Function(Line)	Color
1/8	Central locking signal opens	Blue/brown
2/8	Central locking signal closes	Blue/black
3/8	CL signal opens with Double Lock (code FY2)	Gray/brown
4/8	CL signal closes with Double Lock (code FY2)	Gray/black
5/8	Hinged rear door rotary tumbler	Blue/green
6/8	Left side door rotary tumbler	Yellow/black
7/8	Right side door rotary tumbler	Yellow/white
8/8	Circuit 31, ground	Brown

Pin	Function(Line)	Color
1/8	Central locking signal opens	Blue/brown
2/8	Central locking signal closes	Blue/black
3/8	CL signal opens with Double Lock (code FY2)	Gray/brown
4/8	CL signal closes with Double Lock (code FY2)	Gray/black
5/8	Hinged rear door rotary tumbler	Blue/green
6/8	Left side door rotary tumbler	Yellow/black
7/8	Right side door rotary tumbler	Yellow/white
8/8	Circuit 31, ground	Brown

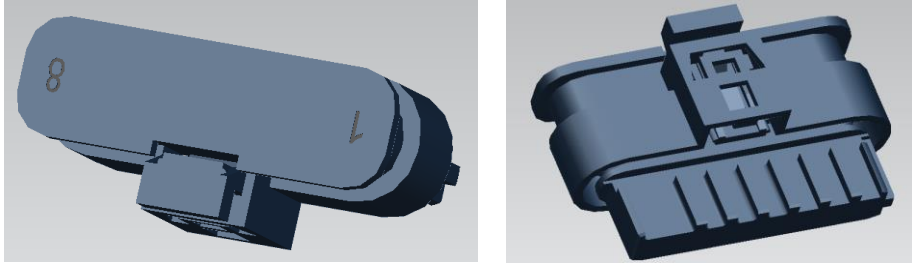
Pin	Function(Line)	Color
1/8	Central locking signal opens	Blue/brown
2/8	Central locking signal closes	Blue/black
3/8	CL signal opens with Double Lock (code FY2)	Gray/brown
4/8	CL signal closes with Double Lock (code FY2)	Gray/black
5/8	Hinged rear door rotary tumbler	Blue/green
6/8	Left side door rotary tumbler	Yellow/black
7/8	Right side door rotary tumbler	Yellow/white
8/8	Circuit 31, ground	Brown



# Parts

## Comes with option code EA5:

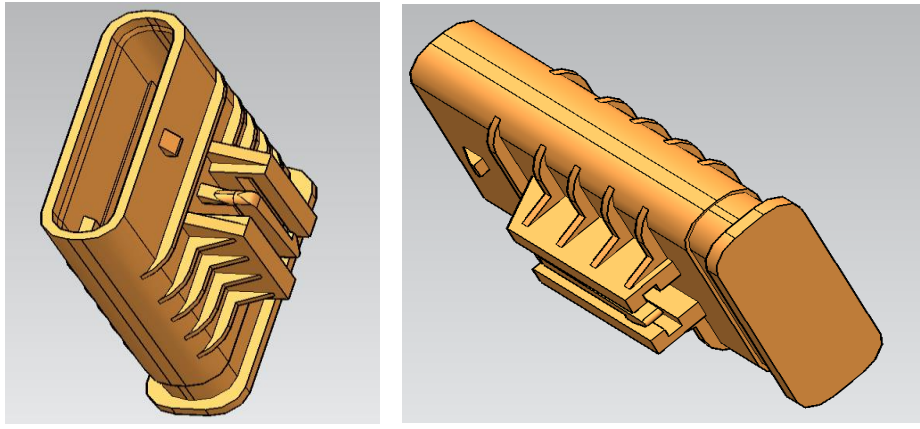
If option code EA5 is ordered, the vehicle comes with the following connector: **A0225453226**



## To be ordered by Customer:

To plug into the EA5 connector, the customer needs to order:

Mating connector **A0485453928**



### Pin / contacts part numbers

- A0009824128 – Crimp pin contact 0.5mm MLK1.2 (accepts 0.5mm wire)
- A0475459928 – Contact pin 0.75-1.0mm MLK1.2 ( accepts 0.75 to 1.0mm wire)
- A0015455080 – single wire seal 0.22-1.0mm MLK1.2 (seal ring for 0.22-1.0mm wire if connection needs water resistance)