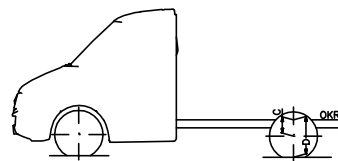
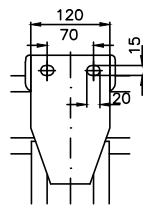
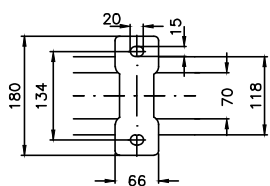


Einzelheit Z M 1:5

Einzelheit X M 1:5



Material thickness: Body support 0.1.0 mm
Longitudinal member 0.1.0 mm

1F3 Chassis with cab
1K3 Sprinter standard
1N4 Mercedes 3000 rpm
1M3 Engine OM 681 DE 32 LA 120 kW (163 hp) 3800 rpm
1M4 Engine Interimversion EPA 14/4WRB
1M7 Tyres LT 215/85 R16
1D4 Adjustable co-drivers seat
1060 Frontal

Important notes:
- It is the responsibility of the bodybuilder to ensure that the vehicle is suitable for homologation after the body has been mounted.

- The drawing is simplified to some extent and is not legally binding. For more details and further explanations please see the MBAC-truck User Guide in the bodybuilder portal.
- Please check whether the drawing specification complies with the chassis configuration of your order.
- Optional equipment codes not listed here, KW-codes and changes resulting from feasibility checks (BBA) are not included in the drawing.

All dimensions refer to the standard version.
Measurements of laden vehicle.

Our instructions for the manufacture of superstructures must be observed, when planning to fit bodies of other than Mercedes-Benz manufacture.
Dimensions are subject to a tolerance of up to +/- 3%

vehicle type:	A	B	C	D	G	α° β°				
906.153-13	-	-	-	25.5	25.5	26.9	95.5	18	11	16
tyres	215/85R16									
	215/85R16									
gross vehicle weight				GW (t)	FA (t)	RA (t)		Subject to change.		
				2269	839					
*laden = Stalke work to capacity										
			23.04.15							
			205 Date		205 Date		Mercedes-Benz			
			205 Date		205 Date		Mercedes-Benz			

Cab chassis
Abtig. (Lept.) TE/80D
70546 Struktur
3500/4x2/144.3
HVA 9061000103